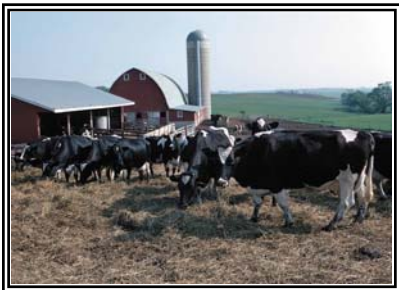




WHAT YOU NEED TO KNOW ABOUT *MOOOOOVING* INTO THE COUNTRY IN STEARNS COUNTY - DAIRY CAPITOL OF MINNESOTA IMPORTANT INFORMATION FOR NEW RURAL HOMEOWNERS

Before you build your new home in rural Stearns County, you need to be aware of a variety of agricultural practices that exist that may influence your decision about where you *moooooove* to. Stearns County has approximately 2,600 livestock operations, the most in any county in the state. Stearns County is the number one dairy production county in the state with over 900 dairies. Livestock production, especially dairy production accounts for a large portion of the economic engine not only in Stearns County, but the entire State of Minnesota as well. See the Stearns County Ag Facts on the backside of this sheet.



MANURE HAPPENS!

MANURE HAPPENS!

MANURE HAPPENS!

WHAT DO YOU NEED TO BE AWARE OF?

1. **Manure application** occurs throughout the year. Manure application may be seasonal (spring or fall) or it may be a daily occurrence. Winter manure application is allowed, so do not be alarmed if you see manure being applied in the winter. Remember, manure smells and there are a variety of methods used to land apply it.
2. **Odor** may be present from agitation of manure storage structures, manure applications, barns or manure stockpiles. Other sources may include silage or other feed stockpiles. Different levels of odors and intensities may be evident depending upon the animal species being raised. There are also many positive fragrances present in rural areas, such as a freshly cut alfalfa field, the smell of the small grains harvest, the soil being worked in the spring and the smell of wildflowers in a native prairie.
3. **Noise** may be prevalent, primarily during the day. However, there may also be noise in the evening from farm machinery during spring planting, fall harvest and 3 to 4 hay harvests in the summer. Noise may also be evident throughout the year from cows *moooooing*, calves bellowing, feeding equipment and other sources such as grain dryers, tractors and other farm implements.
4. **Dust** may be a nuisance, especially during dry conditions combined with high farm traffic on gravel roads. Dust will occur during small grains harvest, hay baling and other times during the year.
5. **Mud or manure** may occasionally be present on the road surface from manure applications and seasonal field work.
6. **Expansions and modifications** to existing livestock operations may occur in agricultural areas as well as the construction of *new* livestock operations.

WHAT CAN YOU DO TO BE MORE AWARE?

1. Research the area where you want to *moooooove* to, whether you are going to purchase an existing home or build a new home. Be aware of prevailing winds, where manure is being spread and the number and types of farms in the general vicinity. If you are going to develop land, make future homeowners aware of these issues. Be informed!
2. Get to know your neighbors, especially if they are farmers and raise livestock. After all, they provide you with the milk that you drink and the bread, butter, ice cream, meat and other food products that you eat. Rural areas are a great place to raise a family and to teach children about agriculture and where milk and other agricultural products come from.
3. If you have a concern about manure application, odor, noise, dust, mud/manure on roads or other issues, visit with your farmer neighbors first. You may also contact the Stearns County Environmental Services Department at 1-800-450-0852 for more information.

SPONSORED BY:

*The Stearns County Board of Commissioners
The Stearns County Dairy Advisory Committee
The Stearns County Feedlot Review Committee
The Stearns County Environmental Services Department*



**Approved:
January 20, 2004**

**Stearns County ESD – Administration Center Room 343 - 705 Courthouse Square
St. Cloud, MN 56303 – (1-800-450-0852 Toll Free) or 320-656-3613 (Main Desk)
320-656-6484 (Fax) - <http://www.co.stearns.mn.us> (Internet)**

**Future Scratch-N-Sniff
Cowpie**



STEARNS COUNTY AG FACTS

DAIRY CAPITOL OF MINNESOTA

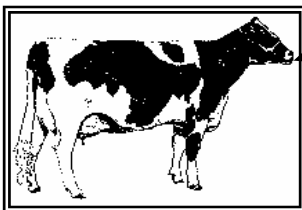
Each Farmer in Minnesota feeds 94 people in the United States and 34 people in other countries! Stearns County currently ranks **Number 2** in the State of Minnesota in Total Cash Farm Receipts (\$334 million with 84.6 percent of this total being from livestock production). The Minnesota Dairy Industry earned over \$2.4 billion in income in 1998 and employs over 53,595 people statewide. **Local support** for the Dairy Industry is critical as the number of dairy farms drops:

<u>Item:</u>	<u>Rank:</u>	<u>Production:</u>
Livestock Cash Farm Receipts	1 (2001)	\$281,032,000
Value of Milk	1 (2002)	\$161,000,000
Milk Production	1 (2003)	1,089,000,000 Pounds
Oats Production	1 (2002)	1,490,600 Bushels or 25,700 Acres
All Hay Production	1 (2002)	549,700 Tons or 130,800 Acres
Cattle and Calves	1 (2003)	182,000 Head
Milk cows	1 (2003)	60,500 Head

Stearns County Dairy Farms = Number One Dairy Production County In Minnesota!

<u>Year:</u>	<u>Farm Count:</u>	<u>Average Farm Size:</u>	<u>Lbs. Milk Per Cow:</u>
1922	4,379	9.7 Cows	N/A
1950	4,166	13.1 Cows	5,500
1975	1,905	37.1 Cows	10,000
2000	1,076	58.6 Cows	17,500
2001	982	62.6 Cows	17,800
2002	943	65.0 Cows	18,000

Every 1,000 dairy cows within a community contributes approximately \$2.7 million in farm income, employs 12 people, and uses 1,224 acres of corn and 621 acres of hay. Raising replacement heifers in the community would increase this contribution by \$1 million. The purchased services for 1,000 animals would add \$65,550 in veterinary and breeding insurance, \$167,323 in interest, \$63,835 in supplies, \$58,650 in utilities, \$57,600 in taxes and insurance and \$342,985 in wages. **The typical farm family in Stearns County spends over \$367,604 annually, with most of those dollars spent locally (Central MN Farm Business Meeting, 2002).**



MOOOOIVING INTO
THE COUNTRY IN
RURAL STEARNS
COUNTY?

SEE THE OTHER
SIDE OF THIS
FACTSHEET
FOR MORE
INFORMATION!

