

STEARNS COUNTY BOARD OF COMMISSIONERS

DeWayne Mareck – District 1
Mark Sakry – District 2
Vince Schaefer – District 3
Leigh Lenzmeier – District 4
Donald Otte – District 5

STEARNS COUNTY PARK COMMISSION

Robert Piano – District 1
Jim Graeve – District 2
John Peck – District 3
Dave Bechtold – District 4
David Simpkins – District 5
Lowell Olson – Planning Commission Member
Mark Sakry – County Commissioner Member

STEARNS COUNTY PARKS STAFF

LeRoy Gapinski, Park Maintenance II
Joe Kulzer, Park Maintenance I
Brent McMullen, Park Maintenance I
Paul Wirth, Park Maintenance Coordinator
Wendy Hute, Office Specialist IV
Peter Theismann, Park Operations Coordinator
Charles Wocken, Park Director

Report submitted by: Charles B. Wocken

Cover: Quarry Park Derrick Dedication.

CONTENTS

PLANNING

Election of officers.....	Page 1
Bikeway Plan Public Input Meeting Discussion.....	Page 1
Caramel Roll Ride.....	Page 1
Lake Wobegon Trail Saintly Seven Application to Area Planning Organization (APO).....	Page 1
Lake Koronis Regional Park.....	Page 2
Area Learning Center Poetry in the Park.....	Page 2
Grant Applications.....	Page 2
Bicycle Improvements to County State Aide Highway #51.....	Page 2
Parkland Dedication Fee Recommendation of Soil & Water Conservation District Regional Map.....	Page 3
County Parkland Dedication Fee-Munson Township.....	Page 3
Rail Authority Corridor-Brooten to New Munich.....	Page 3
Regional Rail Authority for Trail Development.....	Page 3
Rockville County Park Master Plan.....	Page 3
Winter Grant In Aid (GIA) Trail Assistance Program.....	Page 4
Clean Water, Land and Air Legacy Amendment.....	Page 4
County Capital Improvement Plan (CIP).....	Page 4
Annual County Commission & County Board picnic.....	Page 4
2009 Budget.....	Page 4
Granite Industry Interpretive Center.....	Page 5
Kraemer Lake/Wildwood Trail Open House.....	Page 5

ACQUISITION

Beaver Island Trail Acquisition update.....	Page 5
Stearns County Park Acreage.....	Page 6
Stearns County Commissioner Districts.....	Page 6

DEVELOPMENT

Lake Wobegon Trail Covered Bridge.....	Page 7
Heims Mill Canoe Access Interpretive sign.....	Page 7
Liberty Derrick Restoration.....	Page 7
Abeln Home removed.....	Page 7
Two Rivers Lake Park Site.....	Page 7
Warner Lake County Park Beach Vault Toilet Installed.....	Page 8
Wildwood/Kraemer Lake County Park Ski Trails Reconfigured.....	Page 8

MAINTENANCE

Weather.....	Page 9
Soo Line Corridor Culvert Repairs.....	Page 9

Lake Wobegon Trail Split Rail Fencing..... Page 9
Rockville Park Buckthorn Busting..... Page 9
Lake Wobegon Trail Encroachment Barricade..... Page 9
Wildwood/Kraemer Lake Park Life Estate Septic System..... Page 9
Miller Landing Temporarily Closed..... Page 9
Lake Koronis Regional Park.....Page 9
Fairhaven Mill.....Page 9
Grant-In-Aid Snowmobile & Ski Trails..... Page 10
Staffing.....Page 10

FINANCES

2008 Financial Figures.....Page 10
Donations to Quarry Park & Nature Preserve.....Page 10
Fee Schedule..... Page 11
Quarry Park Revenue 2008.....Page 12
Budget Performance Report.....Page 13

USERSHIP

Boy Scouts Eagle Projects..... Page 14
Volunteer Activity..... Page 14
Rock Climbing Permits Issued..... Page 14
Scuba Diving Permits Issued..... Page 14
Traffic Counts..... Page 15
Lake Wobegon Trail Comments.....Page 15
Quarry Park Reservations Chart..... Page 16
Warner Lake Park Reservations Chart..... Page 16
Mississippi River County Park Reservations Chart.....Page 17
Warner Nature Center Reservations Chart..... Page 17
Number of Reservations Groups Chart.....Page 18
Number or Reservations Days Chart..... Page 18

LIST OF FIGURES

Stearns County Park Acreage Distribution..... Figure 1
Stearns County Commissioner Districts..... Figure 2
Non-Tax Revenue 2007..... Figure 3
Quarry Park & Nature Preserve Reservations.....Figure 4
Warner Lake Park Reservations..... Figure 5
Mississippi River Park Reservations..... Figure 6
Warner Lake Park Nature Center Reservations..... Figure 7
Number of Reservation Groups.....Figure 8
Number of Reservations Days.....Figure 9

PLANNING

MISSION STATEMENT OF STEARNS COUNTY:

The mission of the County of Stearns is to provide quality public services as determined by law and citizen needs, through innovative leadership and the teamwork of its people, officials, and employees. Services shall be provided in a fair, respectful, and professional manner consistent with available human, natural, and economic resources.

MISSION STATEMENT OF PARK DEPARTMENT:

“TO PROVIDE NATURAL RESOURCE-ORIENTED PARKS AND OUTDOOR RECREATION OPPORTUNITIES, THAT ENHANCE THE QUALITY OF LIFE OF STEARNS COUNTY RESIDENTS THROUGH PHYSICAL FITNESS, COMMUNITY BUILDING AND ECONOMIC VITALITY.”

Stearns County Park Commission 11/06

2008 BUDGET OBJECTIVES:

- Rockville County Park: Develop Master Plan
- Beaver Island Trail: complete negotiations with three landowners in Lynden Township and acquire available parcels.
- Two River Lake Park: Open for use.
- Potential Park purchases: continue to pursue grants and negotiate for Nemeth site at Warner Lake County Park, the Mick site on the south boundary of Quarry Park and the Honer site at Kraemer Lake.
- Comprehensive Plan – Recreation Section: continue to implement.

ELECTION OF OFFICERS: Mr. Peck was elected as Chair and Mr. Simpkins as vice-chair.

BIKEWAY PLAN PUBLIC INPUT MEETINGS DISCUSSION: The Park Commission reviewed the meetings in Sauk Centre and St. Joseph. In St. Joseph there was a good turnout with strong support for building the Lake Wobegon Trail from St. Joseph to St. Cloud.

CARAMEL ROLL RIDE: Mr. Simpkins reported that there were over 300 participants. The bridge dedication at Holdingford was part of the event. Lake Wobegon Trails Association donated \$1,000 of the proceeds to the Holdingford covered bridge. Mr. Wocken said that the Park Department will continue to support the ride.

LAKE WOBEGON TRAIL - SAINTLY SEVEN APPLICATION TO AREA PLANNING ORGANIZATION APO: *The Park Commission requested that the APO Pedestrian/Bicycle Committee support the SAFETEA-LU application for funds to build the Lake Wobegon Trail from St. Joseph to St. Cloud. The motion passed.*

LAKE KORONIS REGIONAL PARK:

- a) Grant Resolution for camper cabins: *The Park Commission recommended that the County Board of Commissioners support Meeker County's DNR grant application for funds for camper cabins. The motion passed.*
- b) Boating landing relocation: Meeker County again requested that Stearns County support moving the boat landing at Lake Koronis Regional Park. The DNR stated that there is not enough useable land to improve the present boat landing. *The Park Commission re-affirmed its unanimous decision to not move the boat landing to the location by the beach because of the hazards it poses to children and swimmers. The motion carried.*
- c) Bikeway Path & Co. Rd 20. *The Park Commission does not support Meeker County's proposed internal park trail changes due to their lack of obvious benefit. The motion passed 3 to 1.* The County Board approved moving the pedestrian crossing and constructing the new internal connection trails for reasons of safety.
- d) *The Park Commission unanimously agreed that a master plan must be completed for Lake Koronis Regional Park before any capital projects are approved for the park.*
- e) *The Park Commission unanimously supported the inclusion of the storm shelter in the grant application and that a Lake Koronis Regional Park Master plan must be completed prior to construction of the storm shelter.*

AREA LEARNING CENTER – POETRY IN THE PARK: Mr. Wocken handed out a packet of poems that were being proposed for posting in Quarry Park & Nature Preserve. There was a discussion of posting them for a trial period. It was decided by consensus that the poems would perhaps be more appropriate when the future interpretative center is constructed.

GRANT APPLICATIONS: The Park Commission recommended submittal of two applications to the State DNR: 1) purchase of the 23-acre Nemeth site on the south end of Warner Lake County Park and 2) purchase of 39.5 acres belong to Greg & Carol Mick on the south end of Quarry Park & Nature Preserve.

BICYCLE IMPROVEMENTS TO COUNTY STATE AID HIGHWAY (CSAH) #51 NEXT TO THE KRAEMER LAKE PARK SITE: Information was reviewed on the engineering and costs to build a separated pedestrian/bicycle path along County Road 51 between Kramer Lake County Park and County Road 2. County Road 51 will be re-constructed in 2009 with a minimum of 6' shoulders. A discussion followed on the cost and benefit of a pedestrian/bicycle trail instead of the 6' shoulders.

The Park Commission supported the concept of the following improvements when County Road 51 is rebuilt – a minimum of 6' shoulders, safety features, fog strips, lower speed limit and signage. Mr. Olson's amendment that the design should include what ever possible to accommodate a future separated bicycle path was accepted. The motion passed unanimously. At a later meeting the Park Commission adopted the following motion: *The Park Commission supported eight foot shoulders, fog strips, signs and other safety features for pedestrians, bicyclers and drivers as part of the County Rd. 51 reconstruction project. In addition, financial support will be requested from St. John's. The motion passed unanimously.*

Mr. Wocken reported that 8 foot wide shoulders were approved for County Road 51. The \$250,000 will come out of the County Capital Improvement Program (CIP). St. John's University will contribute \$25,000 towards the project.

PARKLAND DEDICATION FEE RECOMMENDATION OF SOIL & WATER

CONSERVATION DISTRICT REGIONAL MAP The Townships of Lynden, St. Joseph and Melrose have signed agreements that allow parkland dedication fees from their Township to be spent on any County Park project countywide. The Townships of Wakefield, Munson and Sauk Centre discussed signing an agreement but are still considering it.

The County Board discussed the Parkland Dedication ordinance. The County Board requested a recommendation of "regions" from the Park Commission.

The Park Commission moved that the Stearns County Soil and Water Conservation District map be adopted and that all projects funded be in "a manner consistent with the county parks, trails, and open space capital improvement plan or the county parks and open space component in its comprehensive plan." The motion passed unanimously.

COUNTY PARKLAND DEDICATION- MUNSON TOWNSHIP PROJECT PROPOSAL:

The County Board approved granting 100% of the funds collected in that township to the Township for its construction of a picnic shelter, paths, access to the Sauk River, potable water, parking, sanitary facilities, prairie planting and picnic area along the river. Payment of one-half of the projected costs up front was allowed. Payment of the balance was contingent on invoices being received by the County for an amount not to exceed actual costs or the amount in the parkland dedication account – whichever was less.

RAIL AUTHORITY CORRIDOR BROOTEN TO NEW MUNICH: Park Department staff and Commissioner Otte met with three snowmobile clubs to review a proposed relocation of Grant-in-Aid (GIA) snowmobile trail onto part of the 26-mile the corridor.

A grant application was prepared by park staff for capital improvement funds for snowmobile trails that went the County Board. Mr. Wocken reviewed project estimates and said the County would seek additional funds through the National Recreation Trail grant program. The combination of the Snowmobile Capital Grant funds and the National Recreation Trail Grant funds could help open the corridor to snowmobiles, hunting, bicycling, hiking and horseback riding. A public meeting would be held to consider proposed uses.

REGIONAL RAIL AUTHORITY FOR TRAIL DEVELOPMENT: *The Park Commission recommended that the Regional Rail Authority's taxing authority be activated for the construction and operation of pedestrian bicycle trails. The motion passed unanimously.*

ROCKVILLE COUNTY PARK MASTER PLAN: Mr. Piano, Mr. Bechtold and Mr. Peck volunteered to be on the Citizen Advisory Committee for the park. Mr. Olson volunteered as an alternate. The master plan was conducted by Brauer & Associates at a cost of about \$69,000. Several meetings of the committee were called including at least three that invited the general public. All planning was done by the end of the year for County Board acceptance in 2009.

Upon a motion by Mr. Olson and a second by Mr. Piano the Park Commission unanimously agreed that an archery range should not be included in the park.

The Park Commission unanimously selected “Rockville County Park & Nature Preserve” as their choice of a name for the park.

WINTER GRANT-IN-AID (GIA) TRAIL ASSISTANCE PROGRAM: Mr. Wocken gave an overview of the program. *The Park Commission recommended the GIA applications for approval by the Stearns County Board of Commissioners. Motion carried unanimously*

The Park Commission discussed grooming options for St. Joseph to Avon segment of snowmobile trail, which is not in the G-I-A program. The Park Commissioners said staff should make a management decision on how to groom this segment of trail, whether done in-house or contracted to the St. Joe Sno Joes.

CLEAN WATER, LAND & LEGACY CONSTITUTIONAL AMENDMENT ON STATE BALLOT:

Mr. Wocken provided an educational handout about the ballot question. The Commission thought it was a very clear and concise pamphlet in how it described all the components: 33% to Clean water; 33% to Natural Areas & Wildlife; 14.25% to Parks & Trails of regional or statewide significance; and 19.75% to Cultural Legacy and Arts Education. *Upon a motion by Mr. Bechtold and second by Mr. Piano the Stearns County Park Commission unanimously and enthusiastically supported the passage of the Clean Water, Land and Legacy Amendment.*

The Amendment passed. County projects that should qualify for new Sales Tax funding included building the Lake Wobegon Trail from St. Joseph to the Mississippi River, construction of the ROCORI Trail, continuing the development of the Lake Koronis Trail, development of the Soo Line, development of Rockville and Kraemer Lake County Parks, the expansion and further development of Quarry Park & Nature Preserve and the development of a county park in the chain of lakes and Millwood Lakes areas.

COUNTY CAPITAL IMPROVEMENT PLAN (CIP): Mr. Wocken reported that the County budgeted \$250,000 for Rockville County Park development (2009), \$250,000 for Soo Line Corridor development (2009), and \$340,000 for Quarry Park expansion (Greg/Mary Mick site).

ANNUAL PARK COMMISSION & COUNTY BOARD PICNIC AT TWO RIVERS

LAKE: Mr. Wocken presented an overview of the development of the park. Everyone present was invited on a tour following the meeting adjournment. Commissioners Otte, Schaefer, Mareck and Sakry joined the park commissioners for the picnic and tour.

2009 BUDGET: Park Commissioners asked about adding staff to maintain the newly acquired parks. Mr. Wocken reported that the County had incurred substantial additional personnel costs because of the recent personnel study and that it was unlikely new positions would be approved. He said he would ask for a full time position. The Commission insisted on asking for one additional full time maintenance staff.

The 2009 budget will also include requests for Master Planning funds for Kraemer Lake County Park and trail construction on the Soo Line.

GRANITE INDUSTRY INTERPRETIVE CENTER:

The Park Commission unanimously supported the Interpretative Center staying in the master plan for Quarry Park and Nature Preserve.

KRAEMER LAKE/WILDWOOD TRAIL OPEN HOUSE: Mr. Theismann reported that there was good turnout at the preview of the Wildwood Kraemer Lake County Park Wildwood cross-country ski trails. Between 1 p.m. and 4 p.m. on a chilly day there were about 80 hikers toured the trails.

ACQUISITION:

BEAVER ISLAND TRAIL ACQUISITION UPDATE:

Leonard site: 2.78 acres, \$22,743, 1210 lineal feet.

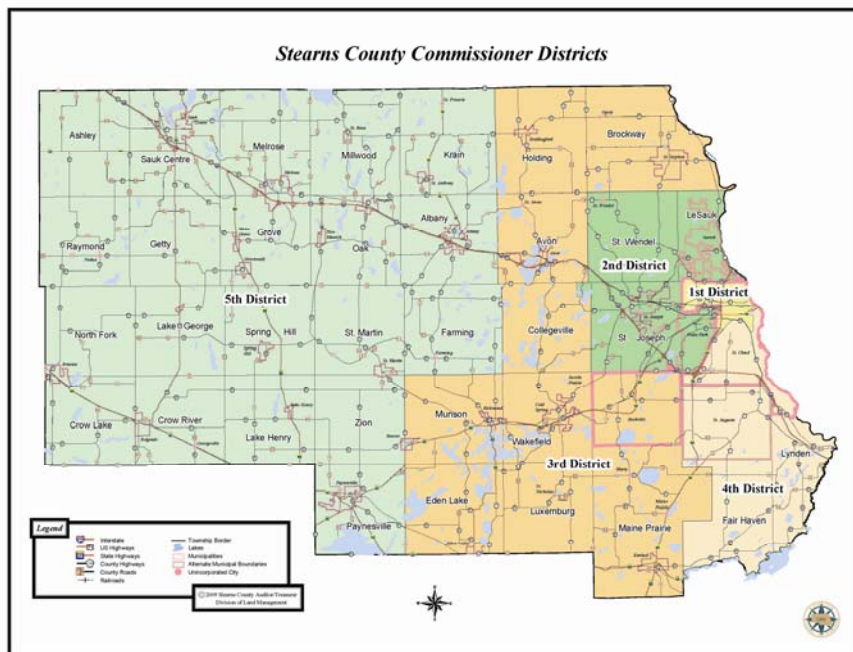
Latzka site: 3.00 acres, \$24,000, 1306 lineal feet.

The County could not reach agreement with Mr. Bischoff and will divert the trail around his property into the County Road 75 right-of-way. The next step will be to build an aggregate pathway connecting the River Country Trail at the Co. Rd. 143 intersection northward to the city limits of St. Cloud

**STEARNS COUNTY PARK ACREAGE DISTRIBUTION
DECEMBER 31, 2008
COMMISSIONER DISTRICT**

PARK NAME	1	2	3	4	5
Mississippi River County Park			230		
Warner Lake County Park				241	
Upper Spunk Lake County Park			7		
St. Martin Canoe Access					1
Oak Township Park Site					32
Two Rivers Lake Park Site					56
Lake Sylvia Wayside and Access					3
Spring Hill County Park					82
Richmond River Wayside			8		
Lake Koronis Regional Park (partial)					42
Quarry Park & Nature Preserve (1992)		643			
Heims Mill Canoe Access		1			
Fairhaven Mill (not owned by Stearns)				5	
Miller Landing		6			
Lake Wobegon Trail (Leased) size adjusted; 30' width managed		15	29		90
Soo Line Rail Corridor (1999)			84		401
Beaver Island Trail (2003)				31 37	
Trail wayside west of Melrose (tax forfeit 2006)					1
Rockville County Park (2006)			294		
Wildwood/Kraemer Lake County Park (2007)		265			
Acreage	0	930	644	283	708
TOTAL ACREAGE			2565		

Figure 1



DEVELOPMENT

LAKE WOBEGON TRAIL COVERED BRIDGE: Under the direction of the Holdingford Lions Club the City of Holdingford coordinated the construction of a covered bridge across the South Branch of the Two Rivers. The covering was valued at \$80,000 and was funded entirely by donations. Stearns County passed a resolution adopting the perpetual maintenance of the facility. According to local authorities this is the longest covered bridge in Minnesota at 186 ft. The Army Reserve 492 Engineer Company of Mankato assisted with a major portion of the construction.



HEIMS MILL CANOE ACCESS INTERPRETIVE SIGN: John Blee, Eagle Scout Candidate with the Boy Scouts of America designed, built and installed an large interpretive sign of the river at the park. It included installation of a bench for viewing.

LIBERTY DERRICK RESTORATION: Dale Gruber Construction donated about \$30,000 of time and materials to design and construct the derrick house, the final component of the Liberty Derrick restoration project. Stearns County Park staff completed installation of the drum hoists and completed rigging of the mast and boom. They also installed the historic 50 amp motor so that a 4 ton block of St. Cloud Red Granite could be lifted. Dale Gruber Construction coordinated a dedication of the restored derrick with a public stone lifting demonstration on September 19, 2008 as part of a St. Cloud Area Chamber of Commerce meeting at the park. The four-ton stone was harvested from the park. For the immediate future an electrical generator must be rented to run the equipment. Future electrical wiring installation is being researched.

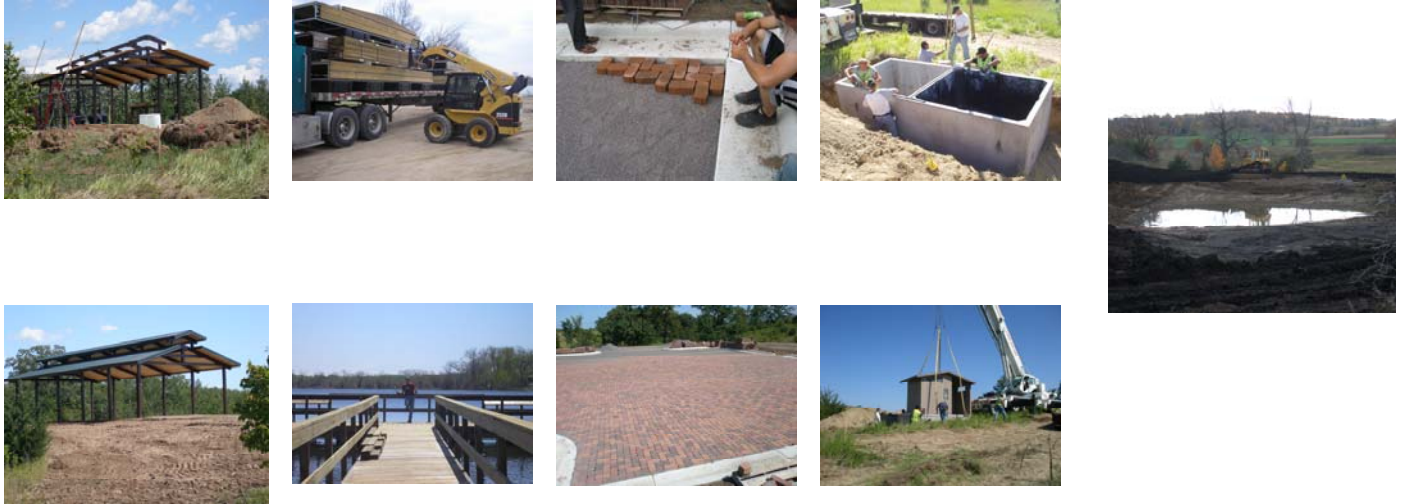


ABELN HOME REMOVED: Following the end of the 18-year life estate of Ted & Alvina Abeln in the home at Warner Lake County Park, the County auctioned off the removal of the house. The area was landscaped and seeded. The space may be used for future parking or an open-air shelter.



TWO RIVERS LAKE PARK SITE: Park development began after sitting idle for 30 years. Development was initiated by the County Board applying the remnant \$105,000 from the dissolved “South Two Rivers Lake Watershed District,” to the watershed-related components of the park. Installed was a “porous paver block” parking area, shelter, vault toilet, fishing pier, boardwalk, interpretive signage, wetland improvement, entrance road and pathways. The Holdingford Snowflyers and the Albany Jaycees both donated to the purchase of the shelter. Blacktopping of the road and pathway remain for 2009. Development coordination was directed by Paul Wirth, Maintenance Coordinator. Park Staff designed, constructed and installed the

boardwalk. Assembly and installation of the fishing pier was also done by staff. Minor modifications were made as it was installed. Assistance on the project was received by the Stearns County Soil and Water District, Sentenced-to-Service, Stearns County Sheriff, County Highway Department, and Borgert Concrete. Park design was developed by Brauer & Associates.



WARNER LAKE COUNTY PARK BEACH VAULT TOILET

INSTALLED: A new sealed-vault toilet was purchased and installed by park maintenance staff near the beach to replace the 30-year old unsealed vault unit. The well next to the beach had been closed due to bacterial contamination. This included the removal and demolition of the “change house” near the beach and the sub-standard vault toilet.



WILDWOOD/KRAEMER LAKE COUNTY PARK SKI TRAILS RE-CONFIGURED:

Park staff consolidated and re-aligned the existing grant-in-aid ski trail segments on the site. This reorganized the trails into a more attractive, inviting and maintenance-friendly ski trail system. The DNR Grant-in-Aid status was retained for the trail system. The Park Department took over all maintenance of the trail for the 2008-2009 ski season. Continued use of the Eynck property for the expert loop of the trail was continued.

MAINTENANCE

Summer maintenance activities included shelter & picnic grounds care, mowing, rodent control, noxious weed control, forest management, prairie management, building maintenance and repair, sanitation, grounds maintenance and improvements, trail maintenance, public safety inspections, and a host of other activities related to the hospitality mission of county parks.

WEATHER:

Fourth snowiest December in 40 years.

SOO LINE CORRIDOR CULVERT REPAIRS: Three emergency culvert repairs were done on portions of the rail corridor from Albany to Brooten.

LAKE WOBEGON TRAIL SPLIT RAIL FENCING: An agreement between the Regional Rail Authority and Jim's Snowmobile & Marine allows the business to use part of the rail corridor. Decorative fencing was provided on the boundary delineating the limits of that use.



ROCKVILLE PARK BUCKTHORN BUSTING: John & Linda Peck invited the Park Commission to join them on Sundays in October at Rockville County Park & Nature Preserve from 2-4 p.m. to help remove buckthorn in the park.

LAKE WOBEGON TRAIL ENCROACHMENT BARRICADE: Park staff installed bollards along 600 foot segment of trail in Albany to prevent a business' trucks and materials from being stored on or near the trail. MN/Dot issued a permit for this.



WILDWOOD/KRAEMER LAKE PARK LIFE ESTATE SEPTIC SYSTEM: The septic system was replaced with a 2000 gallon holding tank and alarm system. The system must be removed at the end of the life estate according to a conditional use permit issued by the Stearns County Board of Adjustments.

MILLER LANDING TEMPORARILY CLOSED: Stearns County began construction of a Westside Service Center which used much of the 6-acres site. Park furnishings were salvaged. Parking and river access will be restored at the completion of the project.

LAKE KORONIS REGIONAL PARK: This park is owned and operated through a Joint Powers Agreement. Meeker County provides the supervision and shares costs 50/50 with Stearns County.

FAIRHAVEN MILL: The Park Department continued its cooperation with Wright County in the maintenance of this site. Supervision is provided by Wright County. Though the property is owned by Wright County it resides mostly in Stearns County. Costs are shared 50/50 with Wright County.

GRANT-IN-AID SNOWMOBILE & SKI TRAILS: There are about 700 miles of groomed snowmobile trails in Stearns County which are maintained for public usage by the Stearns County Snowmobile Association. The trails are established by a permit from the private landowner to Stearns County with the Club or Association providing the day-to-day care. Dedicated trail funds are provided by the State for the maintenance of the trails.

STAFFING:

- 4 permanent park maintenance staff,
- 2 park maintenance aides
- 5 seasonal caretakers (Miss.River, Spring Hill & Quarry)
- 3 gatekeepers,
- 4 Green View, Inc. contract caretakers/attendants at Warner Lake

F I N A N C E S

2008 FINANCIAL FIGURES

OVERALL COUNTY ADOPTED BUDGET:

STEARNS COUNTY'S TOTAL BUDGET	\$109,232,353
STEARNS COUNTY'S PROPERTY TAX LEVY	\$ 61,893,366

PARK DEPARTMENT ADOPTED BUDGET:

PARK DEPARTMENT BUDGET with State Aids (Fund 18)	\$ 875,842
DEBT SERVICE FOR PARK BOND (Fund 35) (includes 1999 bond, Maint. Bldg. & 2002 * 2005-2007 projects)	\$ 670,538

PROPERTY TAX FOR PARK PROGRAM:

PARK FUND LEVY	\$ 859,783
DEBT SERVICE ALLOCATION (estimate)	<u>\$ 670,538</u>
Total Property Tax levy for Parks	\$ 1,530,321

County Population estimate 2007: 146,991
Operational Cost (no Capital Outlay): \$827,563

Operational Cost per capita: \$ 5.63

DONATIONS TO QUARRY PARK & NATURE PRESERVE:

- a) EXCEL ENERGY donated \$1,000 toward the derrick restoration.
- b) DALE GRUBER CONSTRUCTION donated \$30,000 of materials and labor to construct the derrick house at Quarry Park & Nature Preserve. (list other donors to the project - see minutes.
- c) \$500 was donated in memory of Barbara (Barnhart) Beuning,
- d) the Community Foundation donated \$1,000,
- e) Plaza Bank donated \$10,000 toward the derrick project

FEE SCHEDULE:

Warner Lake Open-Air Shelter has these fees

\$60.00 per group on Friday, Saturday and Sunday (May through September).
\$55.00 per group on Monday through Thursday (in season, when caretaker is working)
\$50.00 per group in the off-season (October through April and non-weekends in May and September; no caretaker on duty)
Group of 50 or more requires a permit.
Damage deposit is \$0.50 per person
50% surcharge on weddings

Our other open-air shelters have the same fees:

\$50.00 per group on Friday, Saturday and Sunday (May through September).
\$45.00 per group on Monday through Thursday (in season, when caretaker is working)
\$40.00 per group in the off-season (October through April and non-weekends in May and September; no caretaker on duty)
Group of 50 or more requires a permit.
Damage deposit is \$0.50 per person
50% surcharge on weddings

Fees for Nature Center:

Rental is \$100.00 for the first 4 hours; \$20.00 per hour beyond 4 hours.
A refundable damage deposit will be added to your fee.
There is a 50% surcharge for weddings.

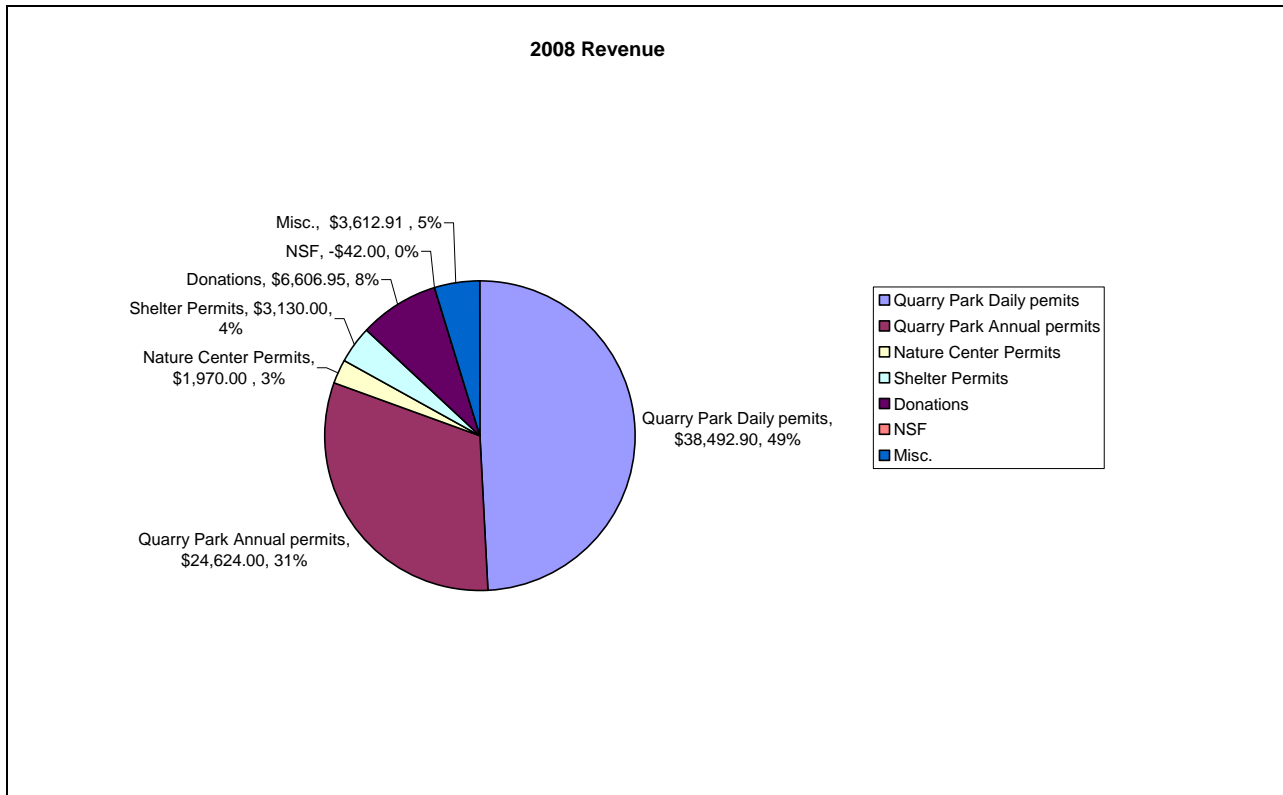


Figure 3

TOTAL REVENUE: 2008: \$78,419.76, (\$69,873.14 IN 2007, \$59,522.70 IN 2006.)

Daily Parking Permit Revenue:

2006: \$30,536.35/7,634 daily permits
 2007: \$36,215.66/9,054 daily permits
 2008: \$38,492.90/9,623 daily permits

Annual Parking Revenue:

2006: \$19,909.00/1,425 annual permits
 2007: \$27,208.00/1,943 annual permits
 2008: \$24,624.00/1,758 annual permits

Total Parking Revenue:

2006: \$50,445.35/9,056 total permits
 2007: \$63,423.66/10,997 total permits
 2008: \$63,116.90/11,381 total permits

Stearns County Parks
Annual Report 2008

2008 Budget Performance Report as of 1/31/08

<u>& Description</u>	<u>Account Classifications</u>	<u>YTD Expenses</u>	<u>Number</u>	<u>Description</u>	
18-541-485	35 - Services & Charges	3,500.00	&	35 - Services & Charges	
Fair Haven	<u>Program Totals</u>	\$3,500.00	<u>Description</u>	Telephone Admin Costs	\$6,543.22
Mill Park			Unallocated	Postage	\$1,061.87
			as to Parks	Printing & Publishing	\$2,952.31
18-541-486	35 - Services & Charges	\$45,005.73		Advertising	
Lake Koronis	<u>Program Totals</u>	\$45,005.73		Dues	\$505.00
				Subscriptions	\$331.43
18-541-495	35 - Services & Charges			Utilities	\$15,609.58
Quarry Park &	Professional, Contractual	\$4,533.09		Professional, Contractual	\$58,547.59
Nature Preserve	Cont. Pers.	\$0.00		IS Charges	\$23,312.07
	Repair & Maintenance	\$83.87		Repairs & Maintenance	\$57,464.80
	Total	\$4,616.96		Mileage	\$3,605.09
	45 - Supplies			Training & Conference Expense	\$1,715.61
	Sup/Op. Exp.	\$1,173.22			
	Durbl. Supp.	\$499.55		Professional, Meeting Expense	\$329.19
	Total	\$1,672.77		Rental Expenses	\$5,717.20
	55 - Capital Outlay			Service Agreements	\$256.19
(Land Acquisition	Land Acq/Imp.	22,199.09			
is through Park	Bldg. Acq/Imp.	\$3,125.27		Permits & Licenses	\$218.75
Bond)	Furn/Equip.	\$982.51		Insurances	\$18,086.00
	Total	\$26,306.87		<u>Program Totals</u>	\$196,255.90
	<u>Program Totals</u>	\$32,596.60			
18-541-497	<u>Account Classifications</u>	<u>YTD Expenses</u>		45 - Supplies	
Lake Wobegon	35 - Services & Charges			Supplies/Operating Expenses	\$44,866.06
	Prt. & Publ.	\$1,752.82		Durable Supplies	\$1,968.62
	Professional Contractual	\$16,555.95		Fuel & Lubricants	\$22,594.53
	Serv. & Chg. total	18,308.77		Oftec Supl.	\$1,229.89
	45 - Supplies			Total	\$70,659.10
	Supplies/Op Expense	\$1,111.83		55 - Capital Outlay	
	Total	\$1,111.83		Office Tech Equipment	\$2,000.00
	<u>Program Totals</u>	\$19,420.60		Land Site Acq. & Impr.	\$14,866.02
18-541-499	Salaries, Permanent	\$296,955.97		Bldg Acq/Im.	\$71,090.10
Unallocated as	Salaries, Part Time	\$42,349.91		Machine AU-Eq	\$20,526.32
to Parks	Contracted Personnel	\$36,973.73		Total	\$108,482.44
	Salaries Over Time	\$2,661.70		Chg. T. Dept.	\$45,792.69
	Longevity	\$3,829.29		<u>Program Totals</u>	\$224,934.23
	VAC/SICK/PTO	\$24,294.78			
	Life Insurance	\$400.40		25 - Personal Service	\$1,925.00
	Disability	\$440.76		35 - Services & Charges	\$907.44
	Flex Plan Contributions	\$64,260.00			
	Pera	\$22,347.97	18-541-597	<u>Program Totals</u>	\$2,832.44
	Medicare	\$5,576.61	Park		
	FICA	\$23,844.84	Board		
	Unemployment	\$1,791.43		GRAND TOTAL	\$1,068,111.85
	EE/ALL/REI	\$870.00			
	Holiday	\$16,968.96			
	<u>Program Totals</u>	\$543,566.35			

U S E R S H I P

BOY SCOUT EAGLE PROJECTS: The total number of Eagle Scout awards earned in the Central Minnesota Council, B.S.A. in 2008 was 56. Of those, 9 (16%) were earned within a Stearns County Park unit.

VOLUNTEER ACTIVITY – 2008

- Ski patrol at Quarry Park (32 Volunteers).....128 hours
- Ski patrol at Warner Lake (14 Volunteers).....56 hours
- Ski patrol at Mississippi (11 Volunteers).....44 hours
- Ski patrol at Kraemer Lake (3 Volunteers)..... 14 hours
- Heims Mill (20 Volunteers).....101 hours
- Kraemer Lake trail work (24 Volunteers).....147 hours
- Kraemer Lake deer stand removal (19 Volunteers)...199 hours
- Mississippi River - You Are Here Posts And Maps
(41 Volunteers).....207 hours
- Quarry Park Buckthorn removal (53 Volunteers)....280 hours
- Quarry Park trail measuring (7 Volunteers).....48 hours
- Rockville Park Buckthorn removal (34 Volunteers)..120 hours
- Rockville Park Maintenance (40 Volunteers).....41 hours
- Rockville Park deer stand & fence removal (26
Volunteers).....220 hours
- Sauk River Cleanup (20 Volunteers).....40 hours
- Warner Lake trail measuring (15 Volunteers).....80 hours
- Wobegon Trail cleanup (29 Volunteers).....54 hours
- Wobegon Trail tree watering – Melrose (10
Volunteers).....24 hours
- Wobegon Trail (12 Volunteers) – Holdingford.....50 hours
- Wobegon Trail – traffic counter monitoring Melrose
(1 Volunteer).....5 hours
- Wobegon Trail bench and tree installation – Sauk Centre
(4 Volunteers).....10 hours
- Wobegon Trail benches and shrubs (22 Volunteers)...133 hours

TOTAL VOLUNTEERS 437

TOTAL HOURS 1991

ROCK CLIMBING PERMITS ISSUED: 56

SCUBA DIVING PERMITS ISSUED: 126

TRAFFIC COUNTS:

Wobegon Trail: infrared beam traffic counters have been stationed at three location along the trail. The estimated usage for one year is about 117,000 visitors

Quarry Park & Nature Preserve: A pneumatic counter was place at Quarry Park for a year's time. The estimated annual usage is about 110,000.

LAKE WOBEGON TRAIL COMMENTS:

- “100 years old and still loving the trail.” H. Petermeier, Albany
- “Bike Trail wonderful – heaven on earth.” Sauk Rapids
- “1st time user. Awesome! Thank you. Never thought it was this beautiful.” St. Cloud
- “Always come in the fall for the wonderful color.” New Prague
- “Love this ride 3 – 4 times a week.” Sartell
- “Went to work in Avon approx. 30 times last year.” Albany
- “Biking – our first visit during the summer – have enjoyed seeing the trail without snow. Great Community Asset.” Memphis, Tenn.
- “We enjoyed the Melrose Experience! Sunny. Great friends, a fun time and Love the Trail.” Elk River
- “Still one of the prettiest spots in the country.” Albany



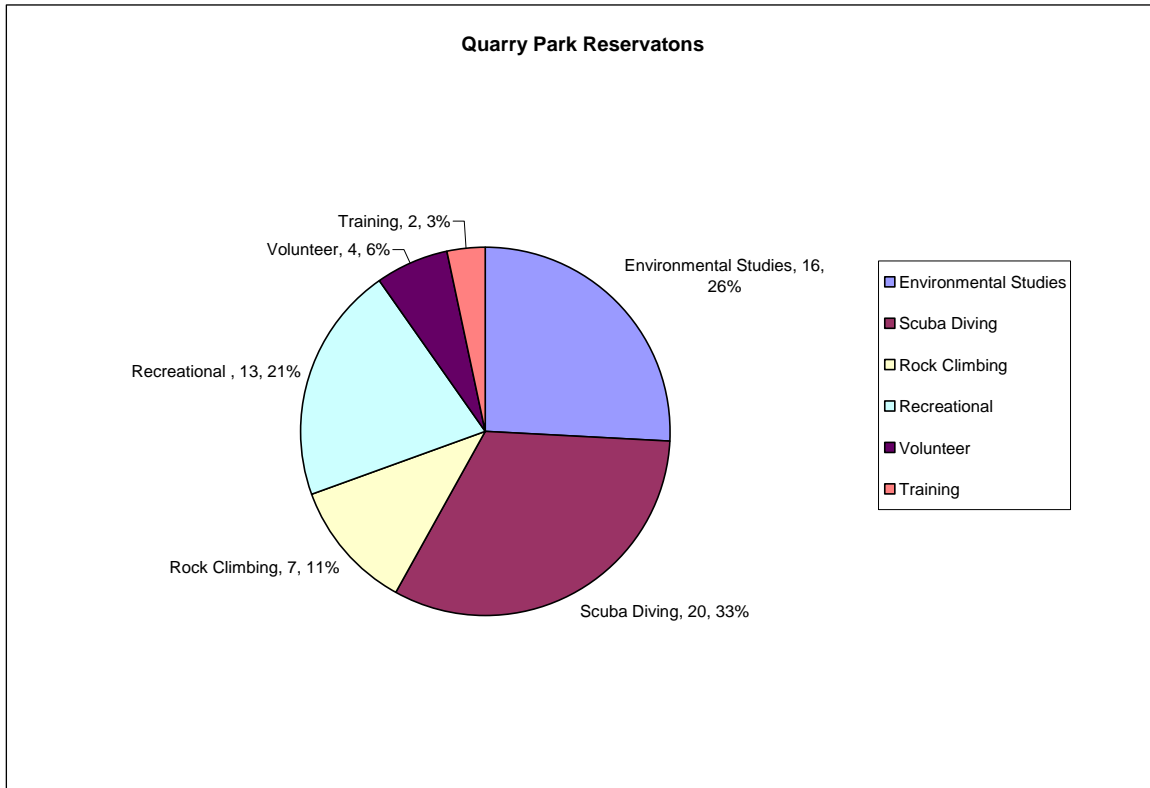


Figure 4

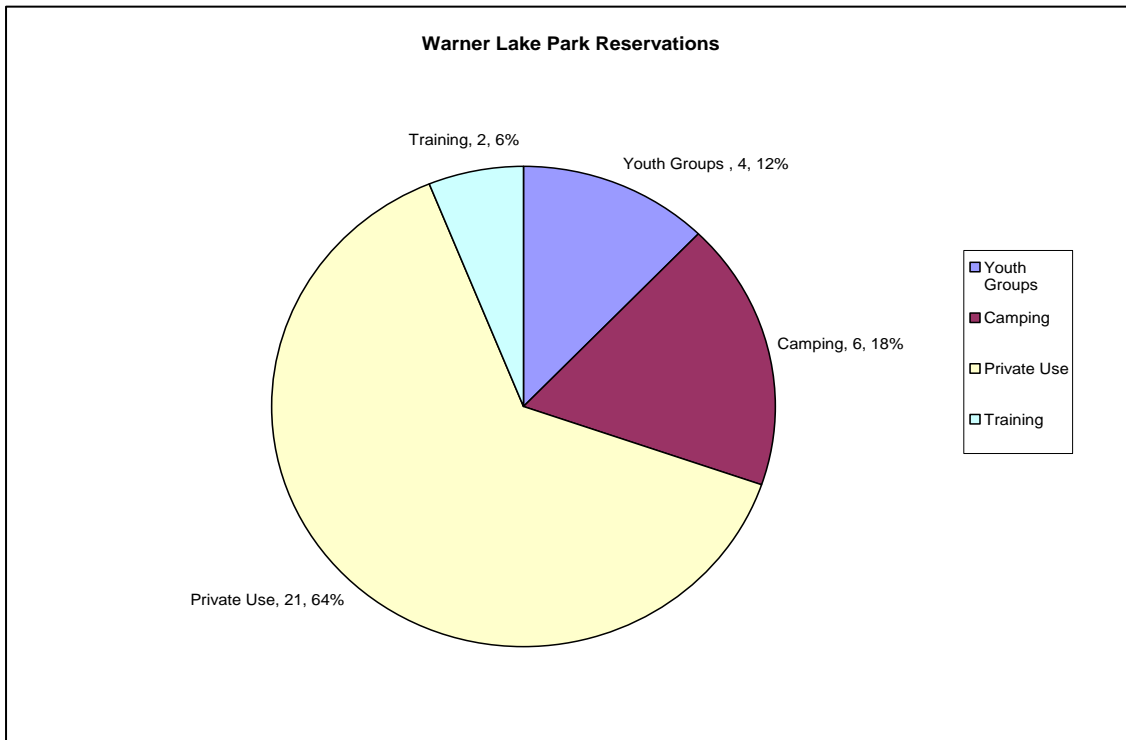


Figure 5

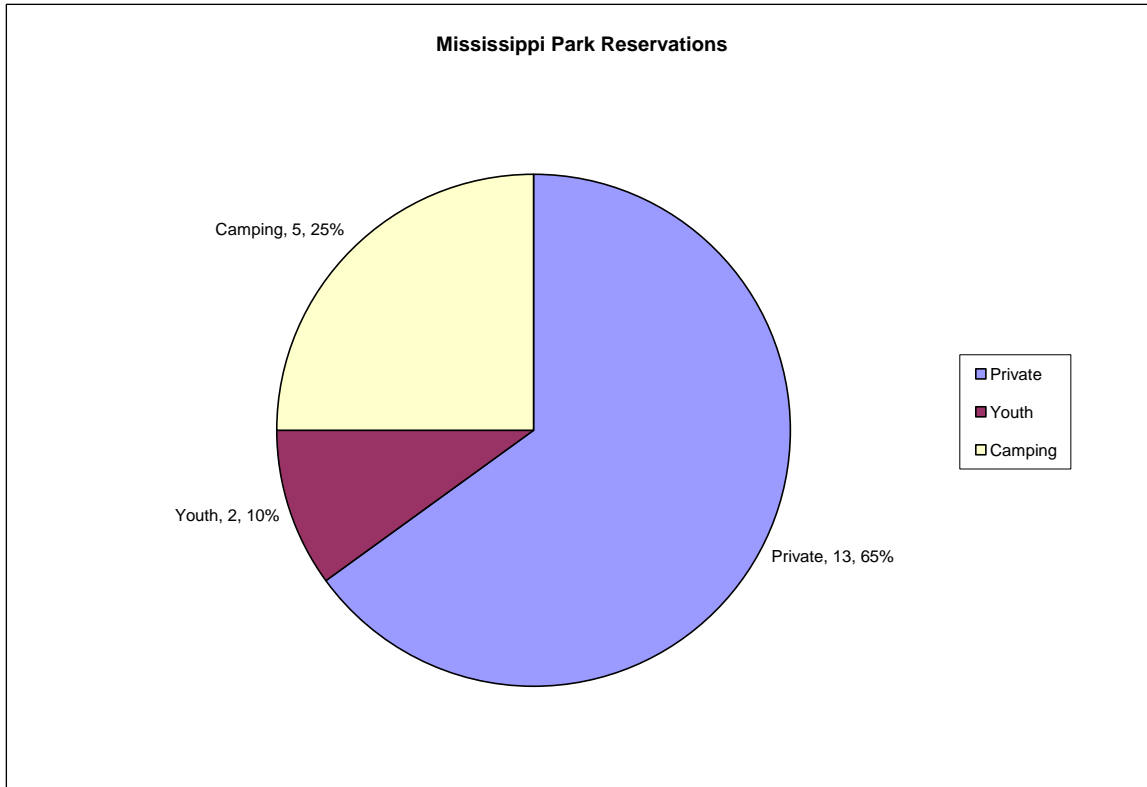


Figure 6

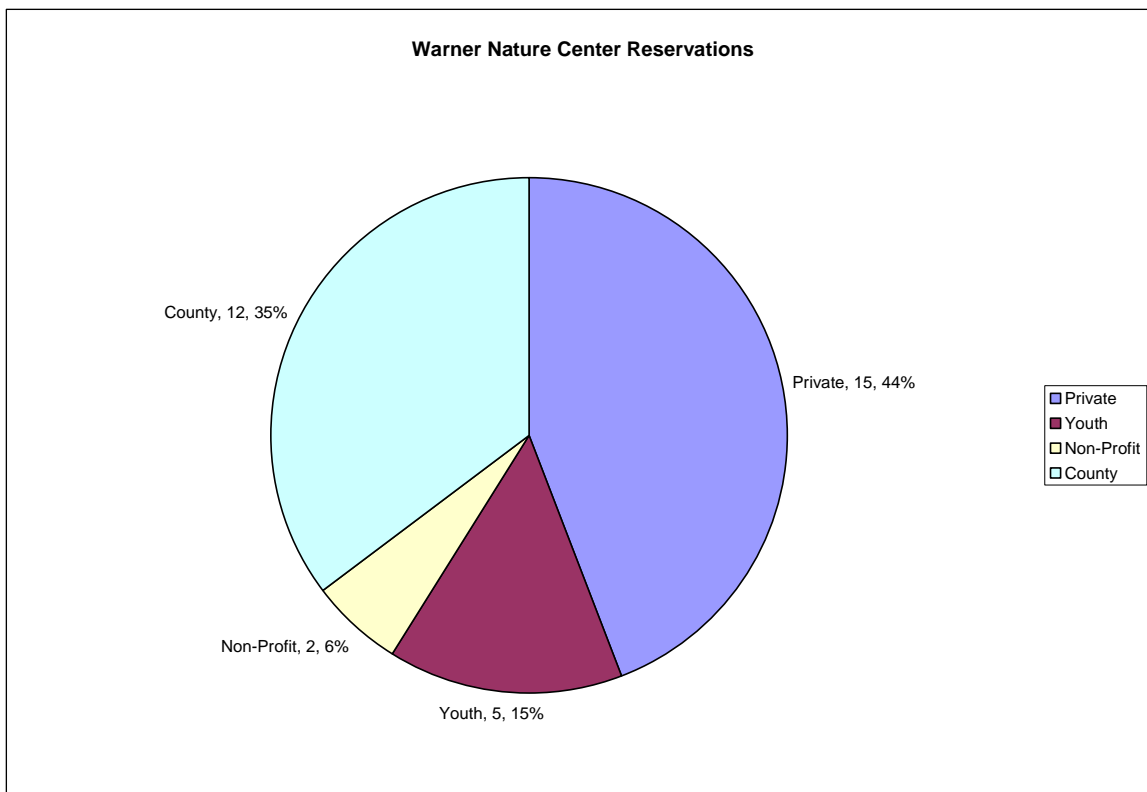


Figure 7

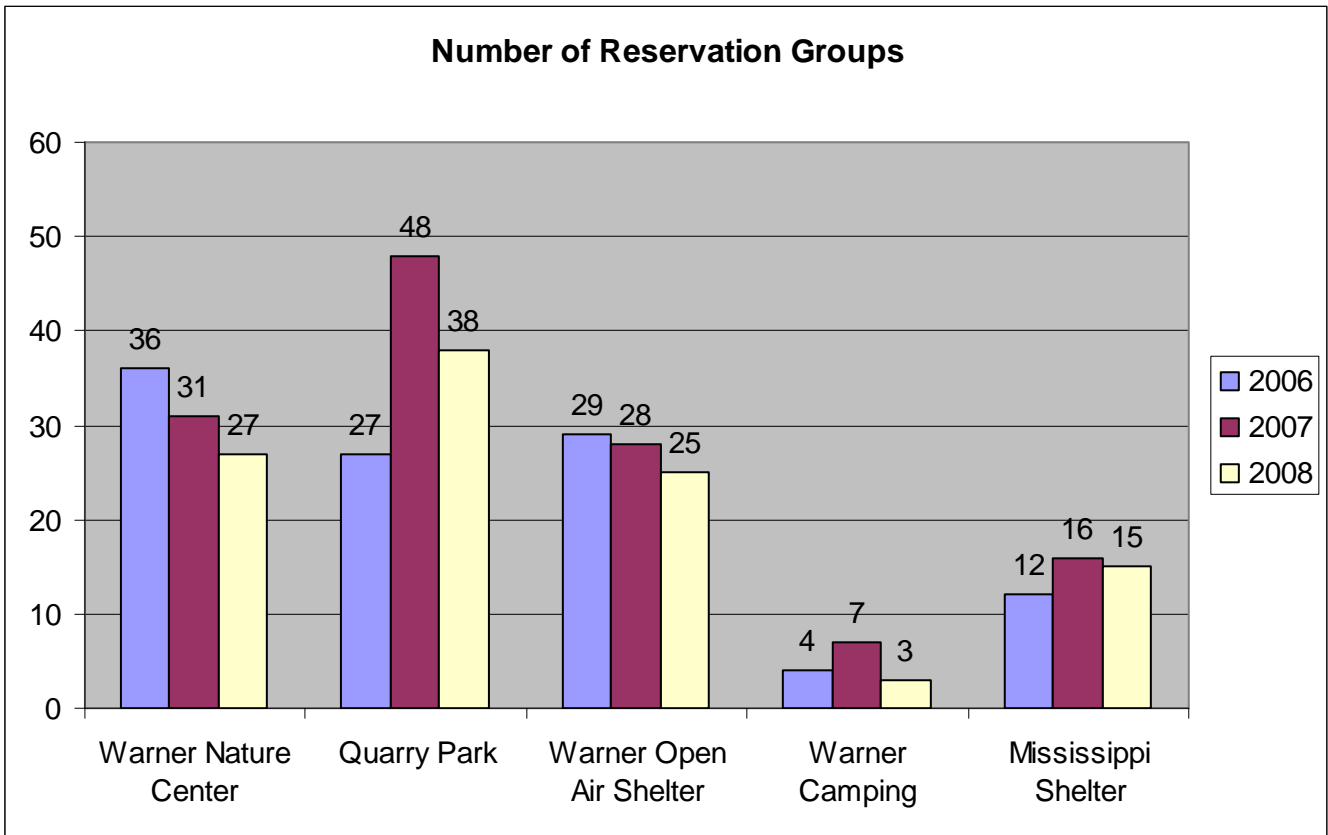


Figure 8

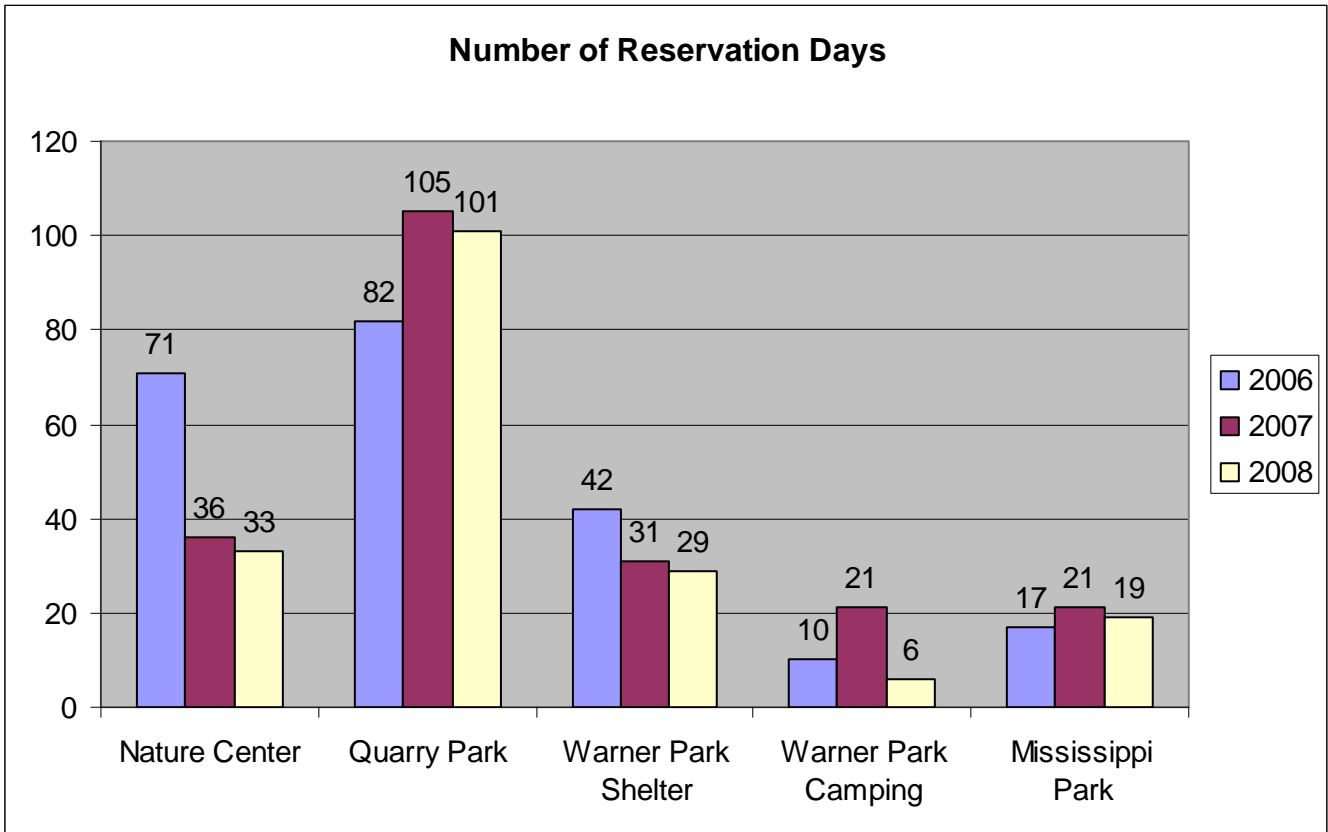


Figure 9