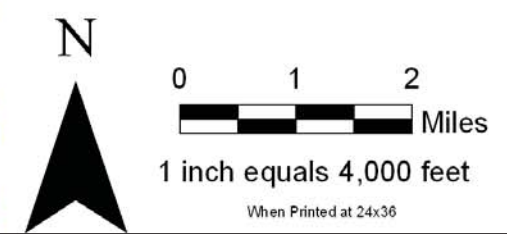


Legend

-  Eagle_Park
-  Rockville Park
-  Major Roads
-  MCBS Sites
-  Forest
-  Grassland/Shrubland
-  Wetland
-  Urban



REGIONAL OVERVIEW MAP

Stearns County Parks Department - Stearns County, MN



August 26th, 2008
Rockville County Park
Master Plan
Task Force Meeting -
Ecological Charette



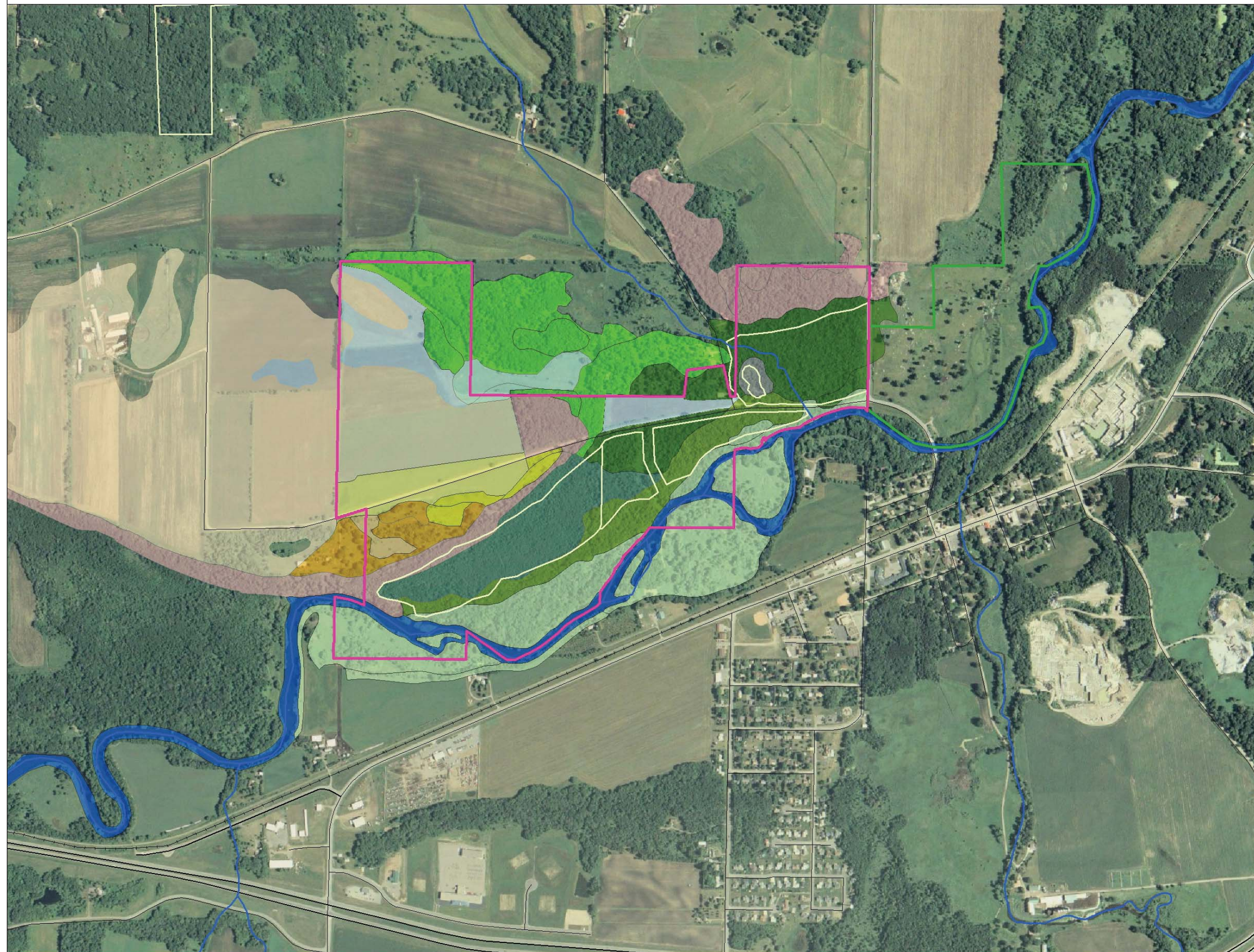
1938 AERIAL PHOTO

Stearns County Parks Department - Stearns County, MN

 BRAUER & ASSOCIATES, LTD.
LAND USE PLANNING AND DESIGN

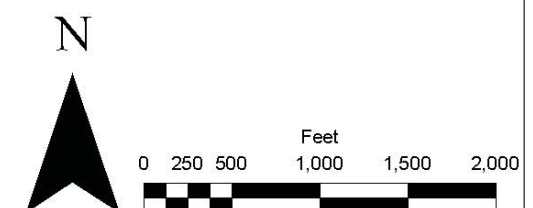


Applied Ecological Services, Inc.



Legend

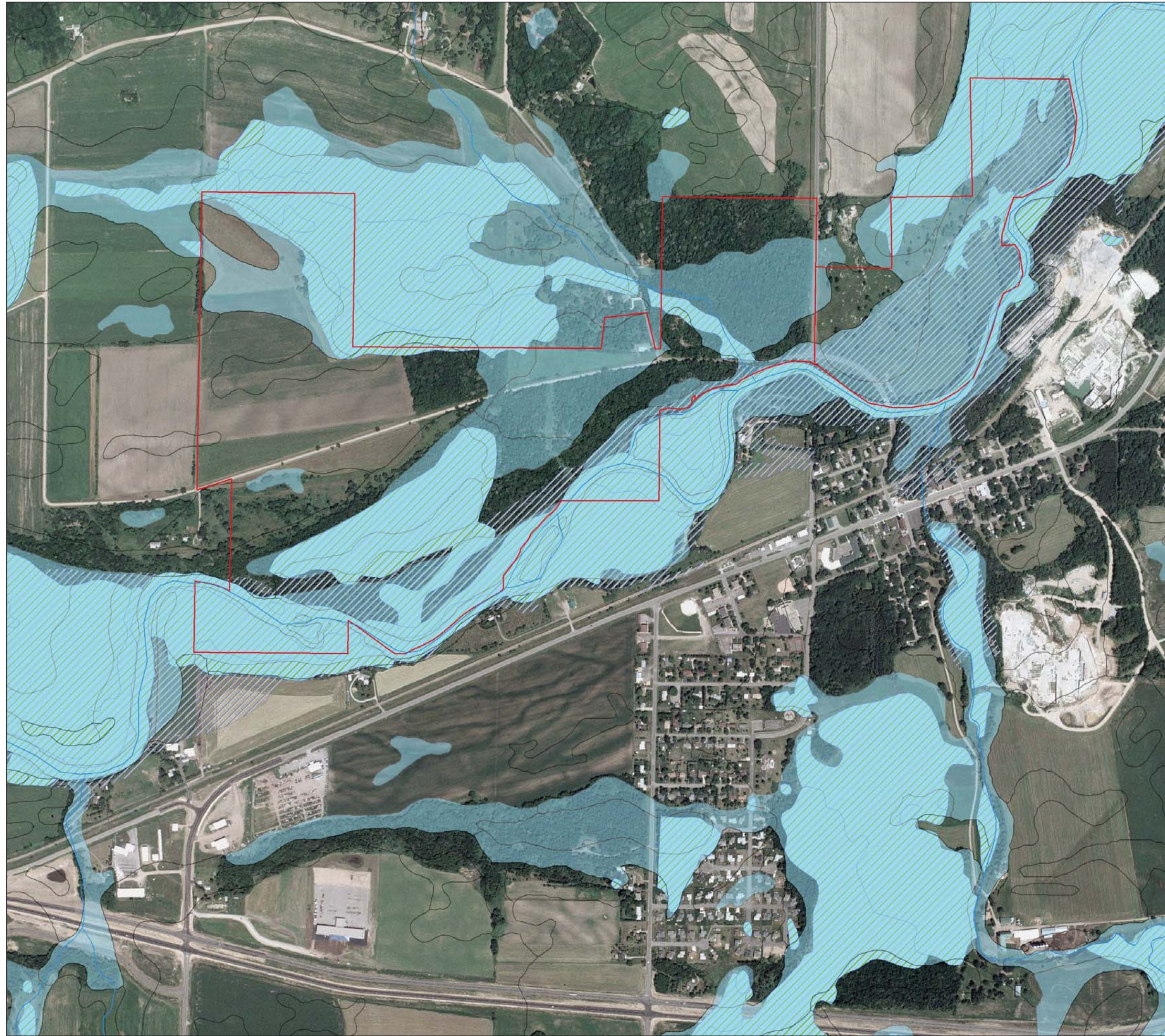
- Rockville Park
- Eagle Park
- County Biological Survey**
- High Quality Plant Communities
- Land Cover Type**
- Wet Forest
- Mesic Forest
- Floodplain Forest - Moderate Quality
- Floodplain Forest - Low Quality
- Tamarack Swamp
- Oak Woodland
- Savanna
- Prairie Restoration - 2007
- Prairie Restoration - 1991
- Wet Meadow
- Pasture
- Rock Outcropping
- Cropland - Hydric Soils
- Cropland - Upland Soils
- Water









2008 LAND COVER MAP
 Stearns County Parks Department - Stearns County, MN

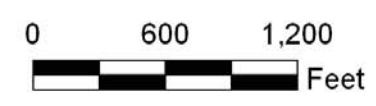
 **BRAUER & ASSOCIATES, LTD.**
 LAND USE PLANNING AND DESIGN





Legend

-  Eagle_Park
-  Rockville Park
-  Non-Hydric Soils
-  Hydric Soils
-  NWI Wetland
-  FEMA Floodway



1 inch equals 400 feet

When Printed at 24x36

HYDROLOGIC FEATURES

Stearns County Parks Department - Stearns County, MN

